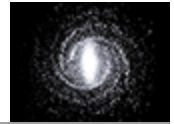


Laser Crystals



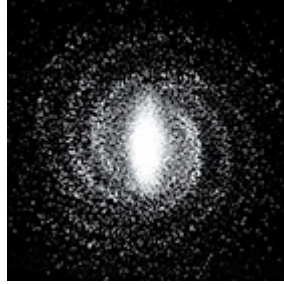
- SCULPTURE
- LASER CRYSTALS
- GALLERY
- ABOUT
- CONTACT
- CART 

Gazing into the sublime: glass paperweights and keychains display data from astronomy, biology, math and physics.

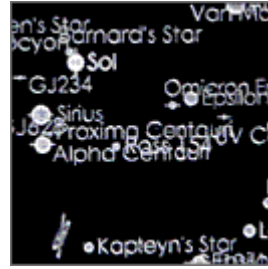
Laser etching is a remarkable way to see complex 3D data. I use high-frequency lasers driven by hand-tooled software to create fine-grained, cleanly drawn structures.

- ASTRONOMY
- BIOLOGY
- PHYSICS & MORE

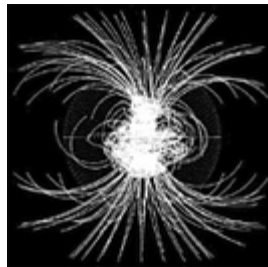
ASTRONOMY



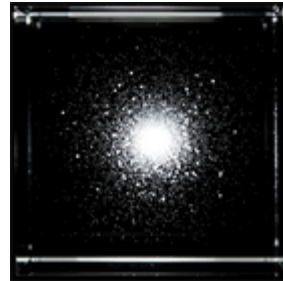
Milky Way Galaxy
Home sweet home



Star Map
Our stellar neighborhood

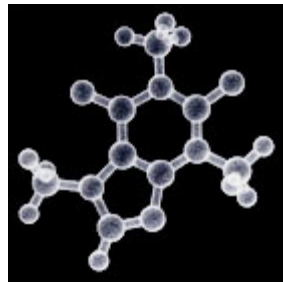


Geodynamo
Earth's magnetic field



Globular Cluster
A jewel of the sky

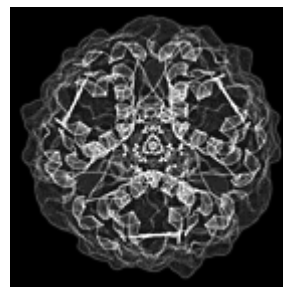
BIOLOGY



Caffeine
The world's favorite stimulant



DNA
The code of life



Insulin
Useful and beautiful

