



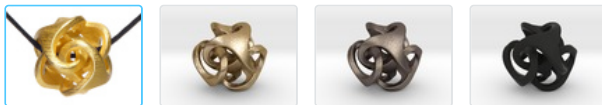
Bathsheba Sculpture LLC

Designs by Bathsheba ☐ Visit Shop ☐ @BathshebaSculpt

Ora Pendant (smaller)

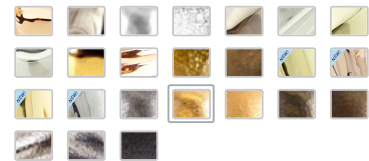


Matte gold plate



☐ PRODUCTS

Metal



Plastic



Polished Gold Steel

Enrobed in 24k gold and polished to a mild sheen with visible print lines.

\$26.02 CAD



☐ Favorite ☐ Wishlist



Bathsheba

- ☐ Contact
- ☐ Follow
- ☐ @BathshebaSculpt

About this Product

This pendant, a little smaller for those who prefer it: 11/16" diameter instead of 1".

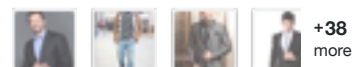
☐ <http://shpws.me/Ccs2>

Jewelry Pendants

☐ What's in the Box



Favorited by (42)



Ora Pendant (smaller)



in Polished Gold Steel

WIDTH 1.748 cm HEIGHT 1.748 cm DEPTH 1.748 cm

This model is 3D Printed in Polished Gold Steel: Enrobed in 24k gold and polished to a mild sheen with visible print lines.

Last updated on 12/23/2014

Comments

Sign In or Join to comment.

Report abuse

More From Bathsheba



Dori \$16.91 CAD



Kino \$16.91 CAD



Sele \$13.01 CAD



Vela \$15.61 CAD

Get design inspiration and exclusive offers

Your email address...

SIGN UP

DESIGN

- Getting Started
Materials
Hire a Designer
For Business
Creator Apps
Maker Tutorials

SELL

- Open a Shop
Developer API
Shop Tips & Tutorials
Offer Design Services

SHOP

- Marketplace
Gift Guide
Beta Products
Gift Cards

COMMUNITY

- Forums
Events
Join the Crew
Education

HELP

- Help Center
Contact us
FAQs
Shipping Info
Material Status
Tutorials

COMPANY

- About Us
Blog
Press
Careers
Become a Partner

Canada

\$ CAD

