

Hurricane 20E

**UW-CIMSS Automated Satellite-Based
Advanced Dvorak Technique (ADT)
Version 8.2.1
Tropical Cyclone Intensity Estimation Algorithm**

Current Intensity Analysis

UW - CIMSS
ADVANCED DVORAK TECHNIQUE
ADT-Version 8.2.1
Tropical Cyclone Intensity Algorithm

----- Current Analysis -----

Date : 22 OCT 2015 Time : 194500 UTC
Lat : 15:19:04 N Lon : 104:21:03 W

**CI# /Pressure/ Vmax
5.8 / 952.1mb/109.8kt**

Final T# Adj T# Raw T#
5.8 6.0 7.1

Estimated radius of max. wind based on IR :N/A km

Center Temp : -31.8C Cloud Region Temp : -77.4C

Scene Type : EYE

Positioning Method : SPIRAL ANALYSIS

Ocean Basin : EAST PACIFIC

Dvorak CI > MSLP Conversion Used : CKZ Method

Tno/CI Rules : Constraint Limits : 1.3T/6hr

Weakening Flag : OFF

Rapid Dissipation Flag : OFF

C/K/Z MSLP Estimate Inputs :

- Average 34 knot radii : 97km
- Environmental MSLP : 1009mb

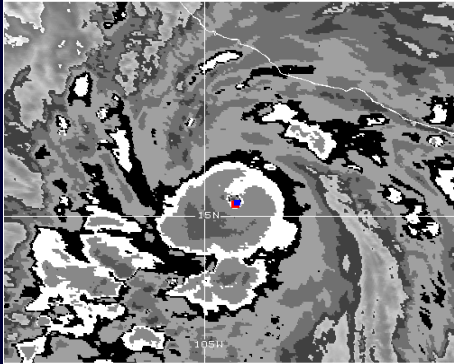
Satellite Name : GOES13

Satellite Viewing Angle : 38.1 degrees

[History File Listing](#)

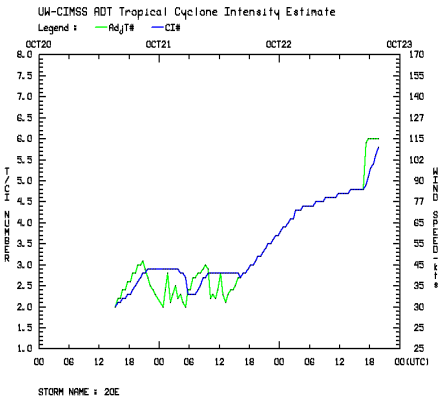
[PMW Information](#)

Satellite Imagery



Initial Guess Position - FORECAST INTERPOLATION
Final ADT Position - SPTRAL ANALYSTS
GOES-EAST INFRARED 19 45UTC 22 OCT 15 UM-CIMSS

Time Series



[HTML5 Movie](#)